

**new**

# ***S-TECH 1000x***

for combine harvesters



**HARVEST WITH  
COMPLETE CONFIDENCE**

***Soucy*** 





# S-TECH 1000X

## THE GUARANTEE THAT YOU'LL BE IN THE FIELDS AT THE RIGHT TIME

### More flotation, less compaction:

A contact area that is unrivaled on the market, 12.5% more than our previous models.

### Simple and fast installation:

Bolt on system installed in 2 to 3 hours, making it easier to operate on tires or tracks, depending on conditions.

### Faster than ever:

Increase in speed up to 17.5 mph (28 km/h), making it 6% faster than our previous models.

## WORK WITH A TOOL YOU CAN TRUST

### Better protection for your combine:

Track system more centered on the final drive to protect its components.

### No daily greasing:

New visible and accessible oil bath hubs, ensuring zero maintenance.

### More time to work in the fields:

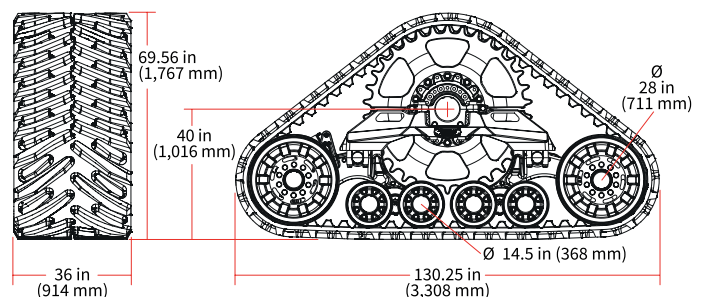
Sleek design for easy removal of debris, reducing cleaning time.

### Designed for heavy equipment:

Robust, proven design for the heaviest harvesting equipment.



S-TECH 1000X











**“MOTHER NATURE IS OUR BIGGEST  
THREAT. HAVING TRACK SYSTEMS FOR  
OUR COMBINE HARVESTERS HAS  
ALWAYS BEEN A NECESSITY FOR US.”**

Donnie Jacobs, Arnold & Jacobs Farm



# ENJOY THE FREEDOM TO WORK AT THE BEST POSSIBLE TIME, WHILE ALSO PROTECTING YOUR LAND.

With more than 10 years of experience in the field designing, manufacturing and testing the best product available, the S-TECH 1000X meets the genuine needs of farmers, so they can enjoy the freedom to work at the best possible time, while also protecting their land. We have packed all our know-how, expertise and understanding of the market into a unique track system.



1



**New adjustment system:**  
increases the lifespan of the track and makes it easier to align.

2



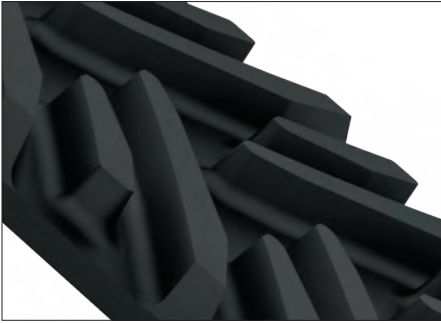
**Hydraulic tensioner with nitrogen accumulator:**  
eliminates the risk of power surges and optimizes the lifespan of the tracks.

3



**Bolt-on track systems:**  
go from tire to track quickly (2 to 3 hours), without any required changes to your equipment.

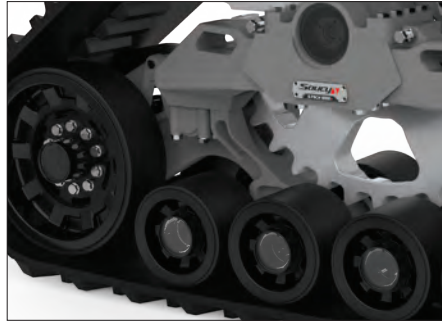
4



**New width, new profile:**

36 inches track with the largest ground contact area on the market (4.4 m<sup>2</sup> (6,826 square inches), with self-cleaning profile in muddy conditions.

5



**Better design of the central frame:**

reduces the pressure exerted on the track to limit the heat generation, and prevent wear.

6



**Sprocket diameter widened to 54 inches:**

increases rolling speed up to 28 km/h (17.5 mph).

7



**New main axis better centered on the track system:**

reduces the force applied to the final drive.

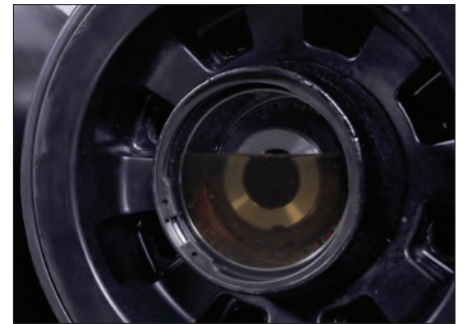
8



**Unique wheels on the market, 40% lighter than steel wheels:**

designed in UHMW and covered with rubber, they reduce the heat generation caused by friction and prevent delamination.

9



**New oil bath hubs with mechanical seals:**

reduced maintenance to 500 hours only.

10



**Pivot pins in oil baths:**

zero maintenance.

11



**Simplified maintenance:**

Only two annual lubrication points.

12



**Tandem wheel mounting:**

follows the contours of the ground and increases riding comfort, while distributing the load on the ground more evenly.



## **SUPER AGILE SALES NETWORK, TO SERVE YOU QUICKLY AND EFFICIENTLY**

Our extensive network of trusted dealers and distributors makes it possible to better serve farmers all around the world.

Our priority: to provide a simple, flexible solution allowing you to get out into the fields at the right time, with a tool you can trust.

To see all our points of sale or for further information, go to **[www.soucy-track.com](http://www.soucy-track.com)**.

Toll-Free  
(Canada/United States)  
**1 877 474-6665**

International  
1 800 9118-7225

Email  
[soucy.track@soucy-group.com](mailto:soucy.track@soucy-group.com)

