



Your  
*off-road*  
partner.

# Replacement Parts

Case IH Quadtrac & Rowtrac,  
New Holland SmartTrax,  
Combine Harvesters

1 819 474-4522  
[sc\\_customer.service@soucy-group.com](mailto:sc_customer.service@soucy-group.com)  
[soucy-group.com](http://soucy-group.com)





# Soucy stands behind farmers, in every row, field, when they are planting, harvesting & getting the job done in any & all conditions.

Our know-how runs generations deep and our tracks are made with the conviction that the hardest work deserves the most reliable tracks.

Tested through strict engineering processes, Soucy tracks offer maximum performance and optimal durability for those who grow crops, working from dawn till dusk.

Tested on real vehicles  
in real conditions  
by real farmers

*"We have confidence that the track is going to last and that the company stands behind us.*

*That means a lot to me as a grower."*

**Travis Meacham**  
Friehe Farms Manager  
Moses Lake, WA










# Maximum Traction & Durability



-  Tested for peak performance & durability
-  Cutting-edge molding process allowing profile freedom = better cleanout, traction and flotation
-  Optimal stability & alignment

## REPLACEMENT TRACKS

### QUADTRAC & COMBINE HARVESTERS

#### OPTIMAL STABILITY

#### A Track That Stays in Place

Cables wound in opposing directions are alternately placed within the track for optimal alignment, ensuring consistent tension and maximizing both performance and longevity.

#### SEAMLESS TRACKS

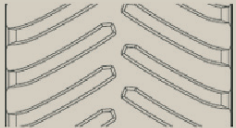
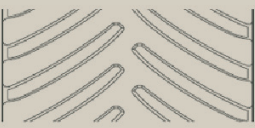
#### Precision Molding Unleashed

Our cutting-edge molding process ensures track uniformity and integrity. Molding the profile and traction teeth as one enables tailored customization for specific applications. The outcome? Better track cleanout, optimal traction and flotation.

#### TRUSTED QUALITY

#### Unwavering Performance

By leveraging advanced design and simulation software, coupled with thorough field validation, our engineering teams optimize every aspect of the track, ensuring peak performance in vibration control, load distribution, heat management, and durability.

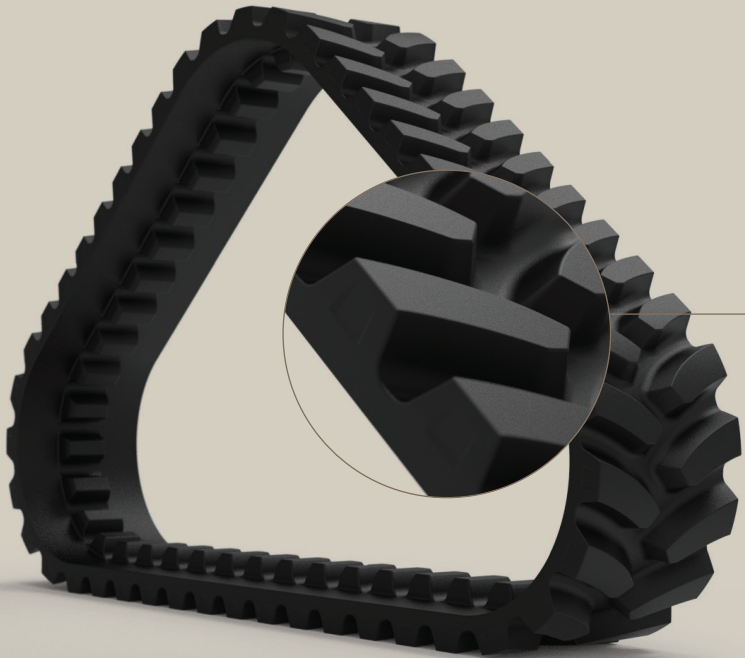
	Q30	Q36
Track Model	1300UX42-2	1360TX42-2
Length	252 in   6401 mm	252 in   6401 mm
Width	30 in   762 mm	36 in   914 mm
Thickness	1.25 in   32 mm	1.25 in   32 mm
Profile Height	2 in   51 mm	2 in   51 mm
Steel Layer	3	3
Cable Diameter	0.2 in   5 mm	0.2 in   5 mm
Weight	913 lbs   415 kg	1,071 lbs   487 kg
Design		
Compatibility	Case IH STX & Steiger Quadtrac, New Holland T9 SmartTrax Model year 2024+ General agricultural application only.	
	Case IH Axial Flow combine harvesters 010, 120, 230, 240, 250 Series (non-suspended undercarriage only). New Holland CR and CX combine harvesters (non-suspended undercarriage only).	





# The Most Durable & Efficient Track

On the Market



40% more durable than the competition

25<sup>mph</sup> Roading speeds up to 25 mph

Tread design: optimal cleanout & traction

Unique heat reduction technology

Superior traction & minimized slippage

1,400 days

Tested through strict engineering processes for over 1,400 days

## REPLACEMENT TRACKS

ROWTRAC

### ENHANCED DURABILITY

40% more durable than the competition, experience unparalleled durability. Its innovative blend of rubber, advanced inner layers, and industry-leading chevron design significantly extends its lifespan.

### BEAT THE HEAT

The unique reduced heat generation proprietary technology increases durability and increases roading speeds up to 25 mph.

### OPTIMIZE OPERATIONS

Offered in three widths suitable for both row crops and heavy-duty draft work. Peak performance with enhanced fuel efficiency through superior traction and minimized slippage.

	R18	R24	R30
Track Model	1180VR44-2	1240VR44-2	1300VR44-2
Length	264 in   6706 mm	264 in   6706 mm	264 in   6706 mm
Width	18 in   457 mm	24 in   610 mm	30 in   762 mm
Thickness	1.4 in   36 mm	1.4 in   36 mm	1.4 in   36 mm
Profile Height	2.25 in   57 mm	2 in   51 mm	2 in   51 mm
Steel Layer	4	3	3
Cable Diameter	0.2 in   5 mm	0.2 in   5 mm	0.2 in   5 mm
Weight	686 lbs   311 kg	847 lbs   385 kg	1,012 lbs   460 kg
Design			
Compatibility	Case IH Magnum Rowtrac tractors		
	Case IH Rowtrac tractors		
	New Holland T8 SmartTrax		





# Unmatched Durability

## The Anatomy of an UHMW-PE Wheel & Rubber

**Rubber**

The convex shape of the rubber maximizes the track lifespan.

**UHMW-PE**

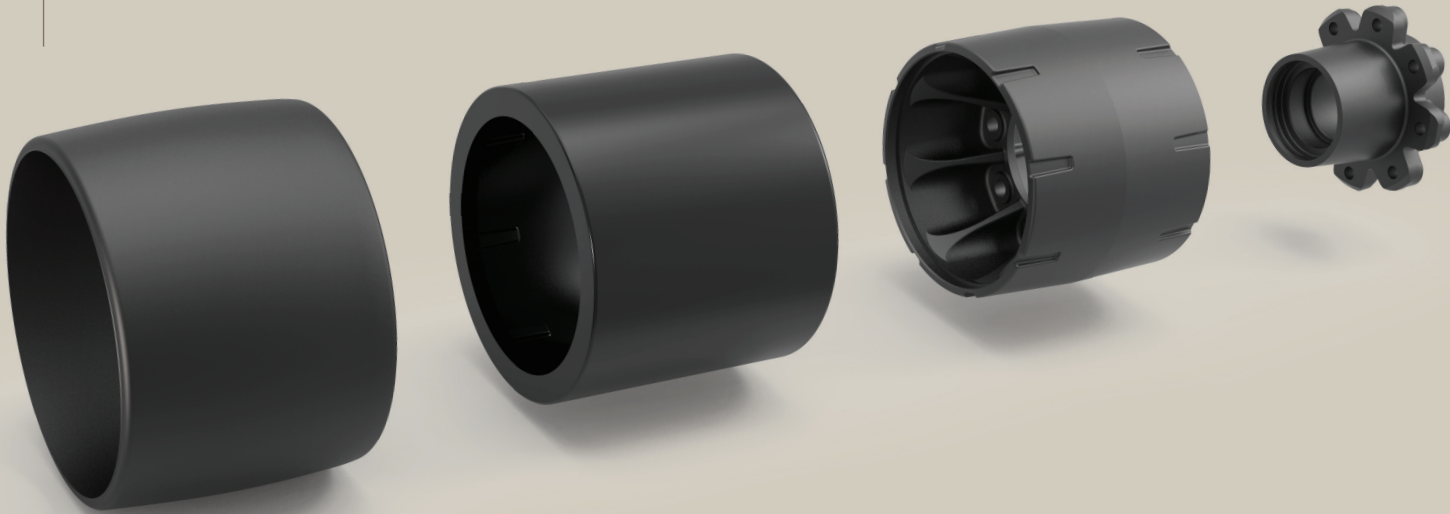
UHMW-PE is molded to the core of the wheel and the rubber is molded to the plastic for better adhesion.

**Steel**

Machined rim.

**Steel**

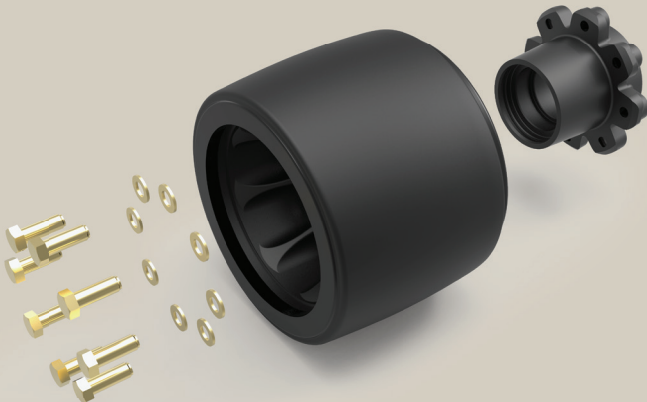
Bolt-on hub.



## REPLACEMENT WHEELS

QUADTRAC, ROWTRAC  
TRACTORS & COMBINE HARVESTERS

Designed to be durable  
& to maximize the lifespan  
of rubber tracks.



### UHMW-PE Bonded With Rubber

➤ To increase the lifespan  
of the wheel and track

➤ For superior adhesion  
eliminating oxidation

### Bolt-on Hub

This wheel is made up of two separate pieces: hub and wheel. As such, installation is quick and easy. The hub could also be kept for future wheel changes in order to reduce maintenance costs.

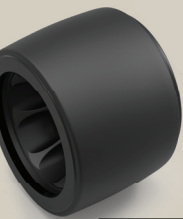
	Quadtrac	Rowtrac	
Part number	AMR0051	AMR0068	AMR0070
Type	UHMW-PE	UHMW-PE	UHMW-PE
Diameter	13.4 in	13.4 in	13.4 in
Width	10 in	8 in	8 in
Compatible Track Width	30, 32 & 36 in	24 & 30 in	24 & 30 in
Compatibility	Case IH STX Steiger & Steiger Quadtrac tractors Case IH Axial Flow Combine harvesters: 010, 120, 230, 240, 250 series	Model year 2018 - CASE IH Magnum Rowtrac tractors & Steiger Rowtrac tractors New Holland T8 SmartTrax	Model year 2019 + CASE IH Magnum Rowtrac tractors & Steiger Rowtrac tractors New Holland T8 SmartTrax





REPLACEMENT TRACKS

	Track Model	Part Number	OEM Part Number	Width (in)	Length (in)	Thickness (in)	Profile height (in)	Steel Layer	Cable diameter	Weight (lbs)
Quadtrac	Q30	1300UX42-2	#91748170	30	252	1.25	2	3	0.2	913
Quadtrac	Q36	1360TX42-2	#91748171	36	252	1.25	2	3	0.2	1,071
Rowtrac	R18	1180VR44-2	#51417162	18	264	1.4	2.25	4	0.2	686
Rowtrac	R24	1240VR44-2	#51446937	24	264	1.4	2	3	0.2	847
Rowtrac	R30	1300VR44-2	#51527550	30	264	1.4	2	3	0.2	1,012



REPLACEMENT WHEELS

	Part number	Type	Diameter (in)	Width (in)	Compatible Track Width (in)
Quadtrac	AMR0051	UHMW-PE	13.4	10.4	30, 32 & 36
Rowtrac	AMR0068	UHMW-PE	13.4	8	24 & 30
Rowtrac	AMR0070	UHMW-PE	13.4	8	24 & 30

WARRANTY

Replacement Tracks

Replacement tracks qualify for a 5-year or a 3,000-hour warranty, for general agricultural application only.

	0 to 1,000 hrs	1,001 to 1,500 hrs	1,501 to 2,000 hrs	2,001 to 3,000 hrs
0 to 24 months	100 %	60 %	30 %	10 %
25 to 48 months	60 %	30 %	20 %	10 %
49 to 60 months	40 %	20 %	15 %	10 %

\* This table shows the percentage covered by Soucy’s warranty.

Replacement Wheels

UMWE-PE wheels are eligible for a 2 year warranty.

The Soucy Group

Founded by Gilles Soucy in 1967, Soucy has over 50 years of experience & has established itself as a leading manufacturer of components for recreational, industrial, agricultural & defence vehicles.

Soucy's commitment to innovation has solidified its status as a strategic supplier in both the OEM market and track business.



Powersport



Agricultural



Defense



Industrial